



PADMAPANI
Society for Human Excellence



Postal Address:

H.No.5-6-311, NGO Colony, Kamareddy,
Kamareddy District, Telangana-503111.

Corporate Office:

8-94/1, Venkateswaranagar Colony,
Malkajgiri bustand Medchal District,

www.padmapani.org

TOGETHER
we can change
MANY
young lives



**ANNUAL
REPORT
2017-2018**

DIRECTOR MESSAGE



Greetings,

A big thanks goes to donors, committee members, & Beneficiaries/people. I am amazed at how fast my years as President have passed. I have learned a lot this year and am inspired to continue serving our members and people other ways as we move forward with health,education, environmental, & social reforms by GOI and here I promise a continued development and strengthening of PADMA PANI Society for human excellence. All our programmes in previous financial year i.e., 2017-2018 have been successful with all your support and courtesy and we, PADMA PANI looking forward to meet your expectations, as we always did, in coming years too. My special thanks to ground staff and our partners who made this year path breaking.

With all my love and respect,

Always yours,
K.SatyaNarayana Reddy
President

CONTENT

- ◇ Introduction
- ◇ Vision & Mission
- ◇ Core Values
- ◇ Our Presence & Approach
- ◇ Our Achievements
- ◇ Journey so far- At a glance
- ◇ Focus on 2017-18
- ◇ Child Development
- ◇ Livelihood Options
- ◇ Skill to Succeed Program- Quest Alliance
- ◇ Digital Literacy – NASCOMM
- ◇ Village Development
- ◇ Child Labor- National Child Labor Project
- ◇ Financial Information

INTRODUCTION

PADMA PANI SOCIETY FOR HUMAN EXCELLENCE

It is popularly known as PSHE is a not-for-profit; Indian Non-Governmental Organization (NGO) registered in the year 1993 under the Andhra Pradesh (Telangana Areas) Public Societies Registration Act 1350 Fasli (Act I of 1350 F) dated 16th March, 1993.

PSHE is formed by likeminded young professional social workers working to create high standard of living for vulnerable and marginalized communities. Executive Boards versatility is enriched through the presence of social workers, financial experts, medical professionals and local community ensuring holistic approach to cater to all kinds of social development activities for all spheres of life.

PSHE firmly believes that the any desired change in the lives of underprivileged children will come only when more and more privileged people participate proactively in finding a solution to the problem.

VISION

We envision a society where every individual has equal opportunities with human excellence, free from all forms of discrimination, strengthening there inherit capacities to live a dignified life.

MISSION

The mission of PSHE is to proactively to be of service to human kind especially children, women, farmers, youth and vulnerable populations in all spheres of life focusing on holistic development of well being through an inspiration and social changes by helping them to help themselves.

“ Our mission and core values drive our culture and are the foundation of our practice. We measure each decision against these standards. ”

- Chris Hanslik

CORE VALUES

- ◇ Foster a sense of community
- ◇ Emphasis' on empowerment
- ◇ Is ecologically responsible
- ◇ Strives for knowledge and equality
- ◇ Supports personal growth
- ◇ Act and interact with empathy with all the Foundation's beneficiaries
- ◇ Promote respect, team work and initiative
- ◇ Act pragmatically, fairly and responsibly
- ◇ Believe in partnership
- ◇ Function with Humility, Humanity and Integrity

OUR PRESENCE

PSHE intends to contribute to the developmental indicators of the Govt. of India and aims its work to facilitate the process of achieving Sustainable Development Goals. Though, PSHE started working in Kamareddy mandal of Nizamabad, progressively expanded its horizons to 4 districts of Telangana namely: Nizamabad, Rangareddy, Mahbubnagar and Hyderabad Districts. Our offices are located in each of the district, with registered office being at Kamareddy and Administrative office located in Hyderabad, Capital city of Telangana.

APPROACH OF PSHE

PSHE implements and facilitates versatile programmes, activities to improve the quality of the lives of the people in their operational areas. After thorough situational assessment analysis with the community in the operational areas, PSHE evolve with a concrete strategy to handle a variety of issues that aim at a wide-ranged, long-term impact on social developmental activities and devised the road map to achieve the set objectives' for the community.



OUR ACHIEVEMENTS



750

Children averted
from child labor

450

Children studying
in remedial centre
with 90% attendance
rate

87

Children were enrolled
into government school
from difficult
circumstances.

78

CLHA children
supported with
love and care

200

Children at 7 different
work sites were
provided with basic
continuum education

200

Rain water units
constructed at
Government schools

1423

Unemployed youth were
trained in different skills
out of them 890 were
placed in corporate com-
panies across Telangana
and Tamilnadu

70

Of the students were
regularized in their
schools when they
returned to their native
place

2000

Children's in these
schools are
benefited with drink-
ing water

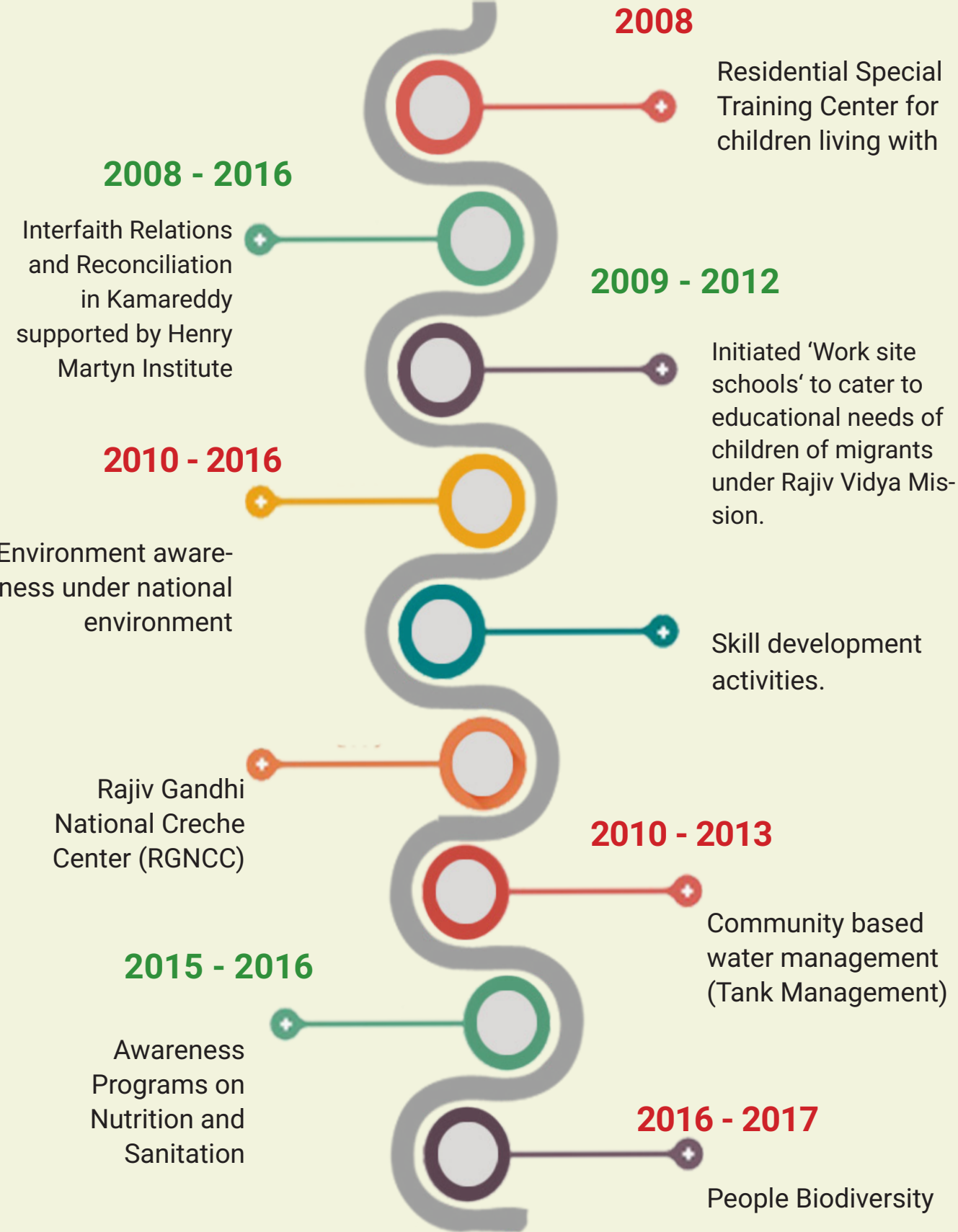
4

Villages has been se-
lected for integrated
village Development in
Kamareddy and Nirmal
District

9

Formation of 9 lead
farmer water user
groups and affiliated
them.

JOURNEY SO FAR AT A GLANCE



Residential Special Training Center for Children living with HIV/AIDS

In 2008 Kamareddy town of Nizamabad district supported by Sarva Siksha Abhiyan (SSA), State government and individual donors: The home provides food, shelter, education, and health services to 50 children who are HIV positive and orphans & completely abandoned by their nearest family members.



Services offered include quality voluntary counseling & HIV testing for free of cost, CD4 count test & support to get ART drugs, drug adherence & regular follow up, regular schooling and skill management.

Interfaith Relations and Reconciliation in Kamareddy supported by Henry Martyn Institute (from 2008 to 2016):



Created a platform for people to approach faith based leaders for conflict resolution; organized common religious meetings attended by leaders of the respective religious groups; Festivals like Dasara, Christmas and Ramazan were celebrated wherein all the people irrespective of religions were invited to understand the importance and showcase our rich culture; organized peace rally with political leaders, youth and other social activities.

Initiated 'Work site schools' to cater to educational needs of children of migrants under Rajiv Vidya Mission (from 2009 to 2012):

320 children at 7 different work sites were provided with basic continuum education; 70% of the students were regularized in their schools when they returned to their native place; 90% of attendance in the schools was recorded

Skill Development Activities

In Nizamabad district under Rajiv Yuva Kiranalu (Employment Generation and Marketing Mission) to convert large number of non-literate, school dropout, unskilled and unemployed youth into productive workforce: imparted skills to 423 candidates out of which 217 have been placed in different sectors generating individual revenue ranging between Rupees 6500/- to 14000/- per month

Rajiv Gandhi National Creche Center (RGNCC),

Supported by Central Social Welfare Board: Provides nutritional food, proper health care, immunization services, love and affection at the center with the aim to prepare the child for the pre-primary education. PSHE is running 2 centers at Drivers colony and BathukammaKunta in Kamareddy. These 2 centres are presently catering to 52 children.

Community Based Water Management (Tank Management)

Supported by AP Community Based Tank Management Programme, I & CAD, Erst-while Government of Andhra Pradesh (from 2010 to 2013) in Gandhari Biknoor Mandal of Nizamabad District

9 tanks were serviced during this period wherein PSHE capacitated Water Users Associations, facilitated general body meetings, facilitated opening of bank accounts, signing of MoU between WUA and DPU for undertaking the project, Stakeholder meetings and subcommittee meeting to make them functional. PSHE covered areas of capacity building, monitoring, learning, experience sharing, transparency and accountability mechanisms of WUA.



People Biodiversity in Kamareddy supported by Telangana State Biodiversity Board, (from 2016 -2017):

PSHE prepared Peoples Biodiversity registers (PBR) in selected villages in Nizamabad District of Telangana State – Kondapur village Sirikonda mandal, Mengara village in Lingampet Mandal and Potangal kalan village in Gandhari mandal. PBR is important base document in the legal arena as evidence of availability of local resources and knowledge.

Environmental awareness under National Environment Awareness Campaign (2010 - 2016), Ministry of Forest and Environment:

PSHE conducted education awareness programmes in the colleges on importance of saving our natural resources: 300 samplings were planted, 1500 samplings were planted by school children across the town, 5 awareness generation sessions were conducted with school children, youth and villagers.



Awareness programmes on Nutrition and Sanitation in Kamareddy with support from Smile Foundation (2015-2016):

Padmapani Society with the support of SMILE FOUNDATION organized essay writing competition on eating habits on 14th Feb 2015 at ZKasturbha School, Domakonda, Nizambad District. The total participants for the program were 250 children, from the class 8th to 10 class students participated enthusiastically.

PSHE organized Hand Wash programme in the Government Primary School, Lalapet, in Hyderabad with 200 children. The children belongs to BPL they are all from ragpicking community. The objective of the program is Educate children about benefits of washing hands before and after meal and after defection



FOCUS ON 2017-2018

CHILD DEVELOPMENT

Poverty, landlessness, unemployment and droughts are some of the reasons which force people to migrate seasonally or sometimes permanently. Most of the work force is men who leave their wives and families in the villages.



Majority of the students miss their regular classes and quarterly exams during September to November as small farmers engage their children to work in their own farm due to high cost of agricultural labor. These children come back to school after 3 months resulting in low pass percentage. Gadwala Jogulamba district has very low literacy rate as well as low pass percentage in the state of Telangana State.

PSHE has been running a Remedial Centre education center located in kakualwar, Gadwal Mandal for the poor children who are irregular in attending classes and drop out of school. Special care is taken to cover the entire syllabus that they missed in regular school as well conducted quarterly exams and unit tests.



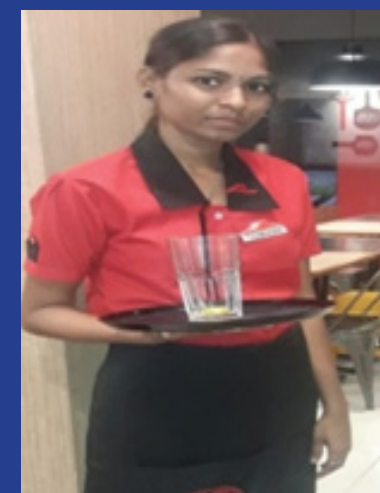
To prevent school drop-outs we identified children who were irregular to the school, migrants and underprivileged in Gadwal District. The remedial education Centre runs in the evening Hours from 5.30 pm to 8.00 pm with 400 children (since 2014 year).

SUCCESS STORY



Shivani belongs to very poor family depends on daily wages. She was one of the bright students in the school and participates in school competitions. But due to the financial problem She had to take a break for 2 months from studies to work in the field during seasonal time. She was keen in perusing her studies but worried about the 2 months break. She came to know about Remedial center run by PSHE and joined immediately. With this Shivani continued her studies instead of dropping out from school. Now She is studying 10th class and also helping her family.

SUCCESS STORY



G. Bhavani is from poor family background. She has 4 members in the family including her. Her father is a Coolie. His father spends all his earnings on Alcohol. They live in Slums of Chennai. Bhavani with great difficulty completed her 10th class and she wanted to gain knowledge on computers but due to financial problem she couldn't. PSHE staff team went for mobilization into the slum areas to promote STEP program activities. Bhavani got the opportunity to gain computer knowledge. She immediately joined the STEP program. She gained knowledge on computers at the same time she also improved her English reading and writing skills and improved her personality development skills. G. Bhavani now working in Domino Pizza hut Chennai and monthly salary is Rs.10000/- (Rupees Ten Thousand only).

THE KEY ACHIEVEMENTS

- Out of 40 children in 10th class, 39 got more than 60% marks.
- Enhanced attendance of children at the regular School
- Parents realized significance of educating the children.

PSHE follows activity based learning methodology and includes cultural activities, regular health awareness, health camps, parent teacher meeting, sports, yoga & meditation which motivated the children to continue their education.

LIVELIHOOD OPTIONS

PSHE implemented the Smile Twin e-learning Program, a programme module for changing the lives of underprivileged youth by providing them with Employment.

This program focused on youth in slum areas of Chennai (Basin Bridge, Korukkupet, Stanley Nagar, Puliyanthope etc). Education and training of selected candidates was given in batches of 40 beneficiaries for duration of 4 months per batch.

The beneficiaries are underprivileged and downtrodden youths between the age group of 18 to 25 years. The eligibility for enrolling into the program was S.S.L.C./H.S.C. passed out candidates. The candidates were trained in basic computer knowledge (MS-Office, Internet, E-mail), functional english (grammar, spoken and written skills), personality development and retail & basic management. During this fiscal year (2017-18) 120 young men benefited through our program. The program resulted in personality development, improved communication abilities of the individual as well as higher confidence and self esteem. This enabled the participants of the program to get employment opportunities in service sector.



PSHE implemented SKILLS TO SUCCEED program of QUEST ALLIANCE for bringing notable transformation in the lives of underprivileged youth. SKILLS TO SUCCEED is a program which is about blended learning and facilitation.

Training on: Digital Life Skills, Quest Alliance basic English and advanced English, My Career, digital literacy, MS Office, Retail Management, Acting studio (role plays) and My coding.

On line assessment: Facilitators conduct through Quest alliance digital learning to know the students internal ability and areas of interest.

SUCCESS STORY



Md.Abdullah is from lower middle class family, completed graduation is Civil Engineering(B.Tech), He attended many interview but failed to break the interview. He came to know about Padamapani Society who are conducting S2S course at free of cost through his friends, he immediately joined the course and now he is working for Ramky constructions as a civil engineer

Career counseling : Was conducted to overcome student concerns and choosing suitable career in line with their area of interest.

Exposure visits gave opportunity to students to interact with HR Managers and know about the process of recruitment. Exposure visits were made to Big Bazaar, Idea Customer Care and Manupuram Finance Pvt Limited. Employment Exchange Programme was conducted for placement assistance to students in order to find suitable career options. PSHE conducted EEP with Café Coffee Day, Manappuram Finance and Margadarshi Chits Pvt Limited. PSHE conducted placement drive at our center and about 80 percent of students out of 104 students got placed in prestigious organizations. We conducted placement drive with companies such as Manaupuram Finance Pvt Limited, Margadarshi Chits Pvt Limited, GVK EMRI, Keerthi Associates, Fortune Honda, MeeSeva, Idea Customer Care, DTDC Courier, DHL Courier, Suzuki Show Rooms, Agarwal Packers and Movers, Global Innova and Navatha Transport.

We conducted 4 terms (3 month is one term). Thus during this fiscal year (2018-2017) 104 beneficiaries were benefited through our program. At every time we provide education and training for one batch beneficiaries



PROMOTED DIGITAL LITERACY UNDER “NATIONAL DIGITAL LITERACY MISSION” SUPPORTED BY NASCOMM FOUNDATION:

PSHE was trained around 300 candidates by the end of financial year. The target audiences were students, unemployed youth, SHG Groups, House wife and small scale employees. Training included basic MS-Office, online Banking transactions, online booking/payments like electricity bills, Gas booking, and Digital payment through wallets



SUCCESS STORY



Malavika completed her SSC in 2015, Her father is a daily labor with that she stopped her education with SSC and looked out for job opportunities to support her family but she didn't get job due to lack of computer and digital skills. Fortunately she saw the paper found the advisement on basic Computer and digital skills. She immediately joined the course and completed. Now she is working in super market as a billing person.

VILLAGE DEVELOPMENT

PSHE implemented Integrated Village Development supported by Suzlon Foundation in Deme Kalan village in Tadwai Mandal in Kamareddy District and 3 villages in Nirmal district namely, Chinchala, Pipri and Venkatapur of Mudhol Mandal in Telangana State. Activities covered wide range of thematic areas: Agriculture development based activities, Prevention of Malnutrition, VDC based microenterprise activities, Zero Darkness program, Zero Garbage program and Zero Blindness program.

Agriculture development activities included farmer exposure visit, agriculture demos, seeds scheme initiative, vermi-compost pit demonstration, fodder development and kitchen gardening. Other activities included Digital E Learning Programme, Eye screening Camp for Re-

fractive Error Camp (for tackling cataract issues in elderly), Birds water trough, Construction of Cattle Tubs, Construction of water tanks, installation of solar street lights, Led street lights and RO Plant Installation. Extensive community engagement and awareness activities were taken up through VDC Meetings, SHG Meetings and Youth Meetings.



CHILD LABOUR - NATIONAL CHILD LABOUR PROJECT

It is an ongoing project where PSHE involved from past 7 years in supported by Govt. of TS at Nizamabad district to eradicate child labor, under the scheme supported by NCLP of 14th five year plan. The target group is children of below 14 years of age and working in establishments. PSHE started NCLP School at Bathukammakunta in the year 2010 to mainstream the child labor into regular education.



MAJOR ACHIEVEMENT

PSHE averted 238 children from child labor
Succeeded in mainstreaming around 56 children to the regular schools till date.

